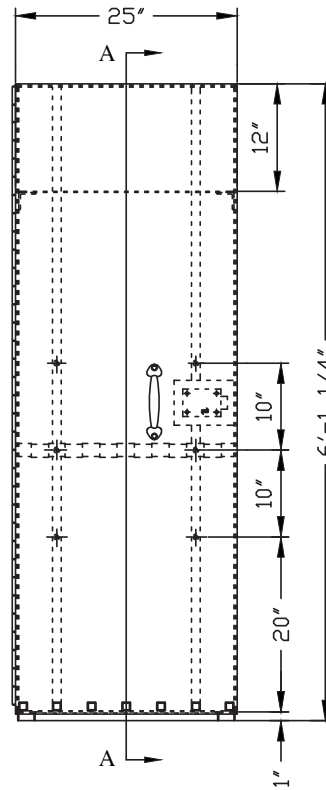
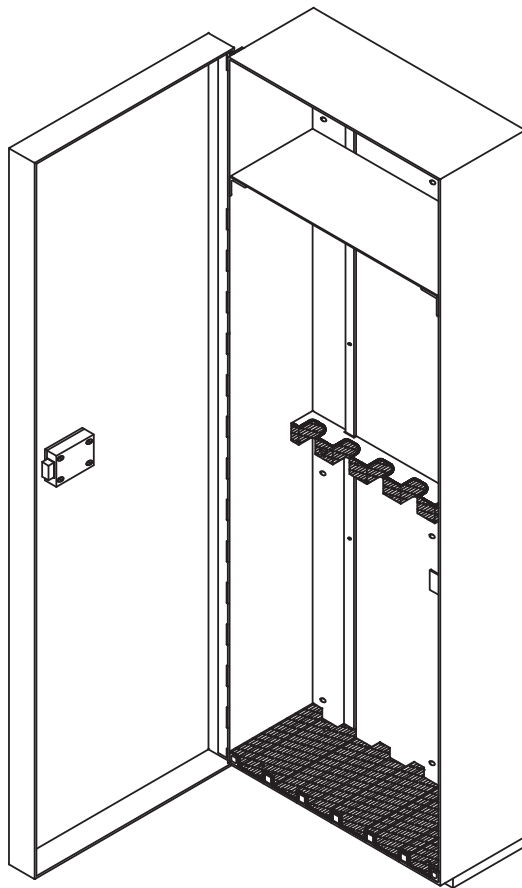


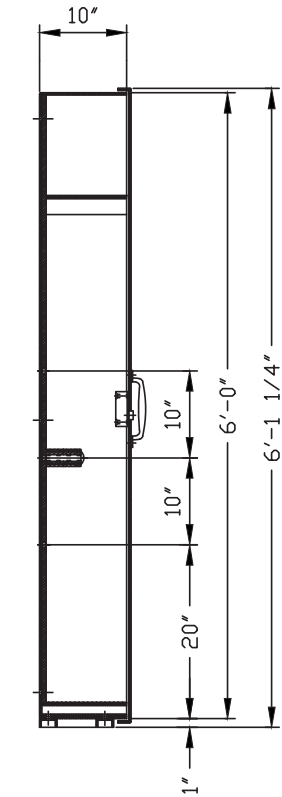
THE G-S COMPANY

web WWW.G-SCO.COM • email SALES@G-SCO.COM • phone 410-284-9549 • fax 410-282-6499

GS5081 Detention Rifle Locker with Removable Ammunition Shelf



ELEVATION



A-A
VERTICAL SECTION

SPECIFICATIONS

- Cabinet: 10Ga steel bent plate pan with 6 holes for $\text{Ø}3/8$ " anchor bolts.
- Door: 10Ga steel bent plate pan with flanges at all 4 sides prep'd for lock and door pull.
- Rifle Stock Separator: 1" x 1" x 11Ga square tube @ 4" O.C.
- Adjustable Barrel Rest: 2" x 4" wood stud with 2" notches @ 4" O.C.
- Hinge: Heavy duty continuous hinge, full door height.
- Door pull: Raised type.
- Lock: 1080A-1 series detention deadbolt lock by Southern Folger.
- Capacity: Can hold up to 6 rifles.
- Base: 1" x 2" x 1/8" channel frame with 4 holes for anchor bolts.
- Shelf: 2" x 2" x 3/16" steel angle welded to cabinet and 10Ga steel plate removable shelf.
- Lining: Floor and barrel rest to be lined with 1/8" thick felt.
- Finish: one coat of rust inhibitive red primer.

Special order finishes and materials available upon request.